

**GERBER**  
TECHNOLOGY

+

**VIRTEK**  
A Gerber Technology Company

the global  
leader in  
composite  
process  
solutions

## GERBERcutter® DCS3600

DCS3600 is a conveyORIZED low-ply cutting system that combines speed, precision, cut-window flexibility, and cutting edge vision-technology to provide the ultimate system for enhanced automation and productivity in the processing of composites and technical textiles

Streamlines lean manufacturing by eliminating excess labor and reducing work in process, lead times, and work planning

Provides accelerated return on investment through automation, throughput, material utilization, and low cost of ownership

Easily integrates into upstream and downstream manufacturing processes through small footprint and flexible cut-window

Efficiently processes diverse materials and cut files ranging from applications in Aerospace to Tension Structures

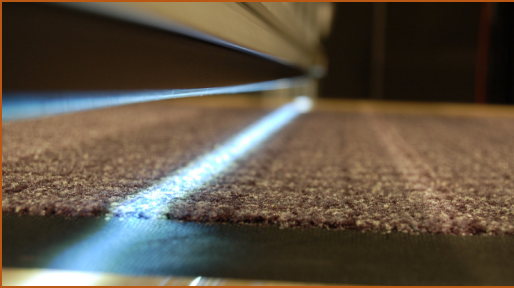


### DCS3600 Features

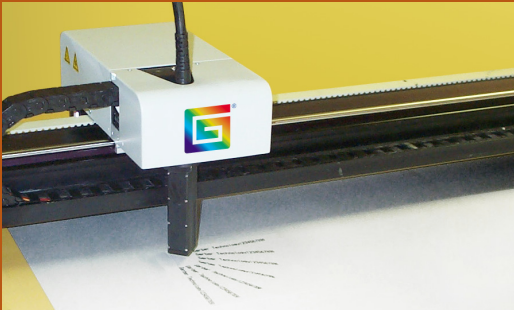
- Provides tailored system configurations to seamlessly integrate with established manufacturing lines
- Cuts diverse plies/cut-parts with ultimate throughput
- Variable Vacuum Regulation (VVR)\* provides the ability to control the vacuum level, thereby allowing for non-porous materials to be easily cut and conveyed
- Electronic Pressure Regulation (EPR)\*\* allows the customer to establish and monitor knife pressure – thereby minimizing knife wear, maximizing fiber integrity, and enhancing cut-quality
- Powerful CutWorks software, including optional ComposiNest, automates part/ply placement for enhanced throughput and material utilization.

\*Standard on the “Long” version of the DCS3600 and an option on the standard length DCS3600

\*\*Available (standard) only on the “Long” version of the DCS3600



GERBERvision Suite of Products (ContourVision, EdgeVision, PatternVision) fully automates material processing for the technical textile markets, providing greater automation, productivity, and flexibility.



InfoJet inkjet labeling system offers fast, accurate identification of cut parts with visible and UV inks.



Single-ply Feeder allows easy roll changes and enables direct cutting from the material roll.

## Recommended System Requirements

CutWorks: CutWorks v6.0

Processor: Dual Core Processor W3503 2.40GHz,4M,L2, 4.8GT/s

Memory: 3GB

Operating System: Windows® XP

Other:

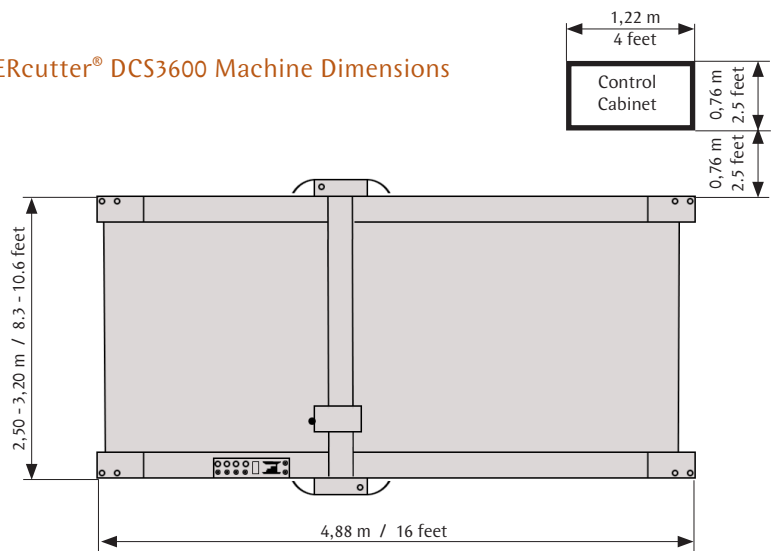
USB port for software security key

CD disc drive for software installation

## Technical Specifications

Characteristics			
Fabric Height		Single Ply	
Cutting Speed (max)	DCS 3600	1,1 m/sec	45 in/sec
	DCS 3600L	1,27 m/sec	50 in/sec
Head Acceleration (max)	DCS 3600	15 m / second <sup>2</sup>	1.5 G
	DCS 3600L	10 m / second <sup>2</sup>	1.0 G
Table Heights	DCS 3606 / L	0,83 - 0,94 m	32.5 - 37.0 in
	DCS 3608 / L	0,80 - 0,85 m	31.5 - 33.5 in
Cutting Area	DCS 3606	1,81 x 1,82 m	71.4 x 71.5 in
	DCS 3608	2,51 x 1,82 m	99 x 71.5 in
	DCS 3606L	1,81 x 3,04 m	71.4 x 120 in
	DCS 3608L	2,51 x 3,04 m	99 x 120 in
Electrical Requirements			
Control and Drive system	4-wire, 200V-240V, single phase, 50/60 Hz, 30 amps		
Table Vacuum	220-440V, 3-phase, 50/60 Hz, 17-35 amps		
Compressed Air	14 liters/min @ 5,5-8,2 bar	0.5 SCFM @ 80-120 PSI	
Operating Environment			
Temperature (max)	43°C	110°F	
Humidity (max)	95% (non-condensing)		

## GERBERcutter® DCS3600 Machine Dimensions



NOTE: Configurations vary according to options selected. Specifications are subject to change without notice. Gerbercutter® and CutWorks are registered trademarks of Gerber Scientific, Inc. Windows® is a registered trademark of Microsoft Corp. Copyright © 2011 Gerber Scientific, Inc. Form No. DCS3600\_E - 03012010