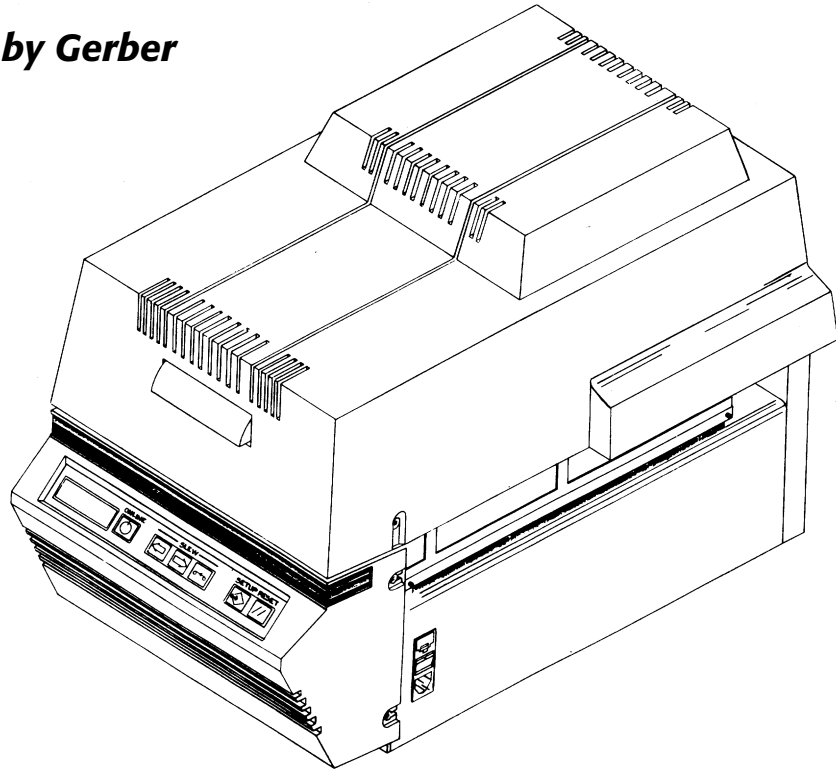


GERBER EDGE

by Gerber



Owner's Guide

COPYRIGHT

COPYRIGHT © 2002 Gerber Scientific Products, Inc. All Rights Reserved.

This document may not be reproduced by any means, in whole or in part, without written permission of the copyright owner.

This document is furnished to support the **GERBER EDGE**. In consideration of the furnishing of the information contained in this document, the party to whom it is given assumes its custody and control and agrees to the following:

1. The information herein contained is given in confidence, and any part thereof shall not be copied or reproduced without written consent of Gerber Scientific Products, Inc.
2. This document or the contents herein under no circumstances shall be used in the manufacture or reproduction of the article shown and the delivery of this document shall not constitute any right or license to do so.

PRINTED IN USA

GSP, GRAPHIX ADVANTAGE, GERBER EDGE, EDGE, and Signmaker are registered trademarks of Gerber Scientific Products, Inc. OMEGA, Support First, Abrasion Guard, GerberColor, EDGE READY, GS 15, HS 15, GSP SPRINT, and SuperSprint are trademarks of Gerber Scientific Products, Inc. Chemtronics and Ultrajet are registered trademarks of Chemtronics Inc.

FCC NOTICE

Warning: Changes or modifications to this unit not expressly approved by the party responsible for compliance could void the user's authority to operate the equipment.

Note: This equipment has been tested and found to comply with the limits for a Class A digital device, pursuant to Part 15 of the FCC rules. These limits are designed to provide reasonable protection against harmful interference when the equipment is operated in a commercial environment. This equipment generates, uses, and can radiate radio frequency energy and, if not installed and used in accordance with the instruction manual, may cause harmful interference to radio communications. Operation of this equipment in a residential area is likely to cause harmful interference in which case the user will be required to correct the interference at his own expense.

This Class A digital apparatus complies with Canadian ICES-003.

Cet appareil numérique de la classe A est conforme à la norme NMB-003 du Canada.

Table of Contents

Introduction	1
In this manual.....	1
Customer support.....	2
Conventions	2
Safety	2
Unpacking and Setting Up	3
Unpacking or repacking the EDGE.....	3
Setting up the EDGE.....	4
Getting Started.....	7
Overview of the printing process	7
Printing a sample job	8
Printing another sample job	14
Using the GERBER EDGE	19
Setting up the job	19
Loading the material	20
Loading the color cartridge.....	21
Printing the job	23
Cutting the printed job on the plotter	24
Maintaining Print Quality.....	26
Cleaning	26
Correcting printing problems	29
Mechanical Description	31
Parts and their functions.....	31
Using the keypad and display	35
Firmware overview	36
Troubleshooting.....	43
Keypad display messages.....	43
Fuse replacement	45
Index	46

Introduction

Congratulations on your purchase of the revolutionary GERBER EDGE®. With the EDGE®, you now have the ability to print computer-generated images on vinyl and other materials. The EDGE prints jobs containing:

- infinite colors
- airbrush fades
- halftones
- small text
- intricate graphics
- repeats
- enhanced fonts

Because a job can incorporate characters, shapes, scanned images, and clip art to create a design, the EDGE opens up a wide array of possibilities for your customers and your business.

In this manual

This manual contains procedures for operating, maintaining, and troubleshooting the EDGE. It is divided into the following sections:

- **Introduction** presents safety guidelines, and customer support information.
- **Unpacking and Setting Up** includes a list of equipment and accessories, unpacking, and installation instructions.
- **Getting Started** provides an overview of the printing process and instructions for printing sample jobs.
- **Using the GERBER EDGE** presents background information and procedures for using the EDGE.
- **Maintaining Print Quality** offers tips for keeping print quality high and material loss low.
- **Mechanical Description** describes the EDGE parts and their functions.
- **Troubleshooting** contains a list of keypad display messages and your responses. Also included is the procedure for changing a fuse.

Customer support

If you require assistance, please contact your Gerber distributor or contact the Gerber Field Service Department at:



800-828-5406 (USA and Canada)
860-43-1515 (International)
860-648-8376 (fax)



e-mail: gpservice@gspinc.com



www.gspinc.com

If you are a Support First™ member, use your toll-free assistance number (for more information on Support First, call 860-528-1028).

Gerber FastFacts™ (answers to technical and service questions) telephone number is 800-222-7446. FastFacts are also available on the web site.

Conventions

The following conventions are used in this manual:

Note: A note contains important information that could affect successful completion of a task.

CAUTION: A caution statement contains information which, if not observed, could result in damage to the equipment.

WARNING: A warning statement contains information which, if not observed, could result in personal injury.

Safety

WARNING: Unplug the power cord before performing any maintenance. Voltage is present inside the system even after the power switch is turned off. All voltage is removed only when the power cord is unplugged.

CAUTION: Static electricity may damage electronic components. Ground yourself by touching any bare metal inside the EDGE chassis prior to handling electronic components.

Unpacking and Setting Up

Unpacking or repacking the EDGE

The EDGE is shipped from the factory in reusable packaging materials. Save these packaging materials for future use in case you need to ship the EDGE. Provided separately with the EDGE is the bulletin *Unpacking and Repacking to Prevent Damage*. Please refer to this bulletin for complete instructions on either unpacking your EDGE or repacking it for shipment.

CAUTION: Failure to repack the printer with the specified packaging materials may result in damage to the unit during shipping. Always repack the printer as described in the bulletin *Unpacking and Repacking to Prevent Damage*. Gerber is not liable for shipping damage due to improperly packed units. If you do not have the proper packaging materials, call the Gerber Field Service Department at 800-828-5406.

Contents of the shipping boxes

The GERBER EDGE is shipped in two boxes: an EDGE box and a system components box.

The EDGE box contains cushioning material and an inner box. The GERBER EDGE thermal printer is packaged in the inner box along with the following:

- An EDGE power cable
- An EDGE printer cable
- Thermal printhead cleaning kit
- An EDGE accessory package consisting of:
 - Two 10 amp fuses
 - *GERBER EDGE Owner's Guide*
 - Lint-free cloth
 - Cutter registration mark eyepiece
 - Pen printhead cleaner
 - Two power cable clips
 - Shipping wrench

The system components box contains:

- Tensioner and roll-holder assembly
- A roll of EDGE READY™ vinyl
- A GerberColor™ cartridge
- A spare foil squeegee

Setting up the EDGE

Follow these guidelines when setting up the EDGE:

- Use the GSP®-approved printer cable provided with the EDGE.
- Press the cable connectors firmly into place, and then tighten each thumbscrew one turn at a time until the connectors are completely seated.
- Connect the printer cable from computer printer port LPT2 or LPT3 to the EDGE. Do not connect the EDGE to LPT1 through the security block.
- Do not connect any other printer, device, or switch box to the printer port you select. The EDGE may not print or the print quality may be unacceptable if you do.
- Ensure that the checksum of the EDGE matches the release level of the Gerber software. For additional information, refer to the “Setup menu” paragraph on page 39.

The power switch and power cord receptacle are located on the right side of the EDGE. The parallel printer connector is located on the back of the EDGE.

► *To connect the EDGE to the computer*

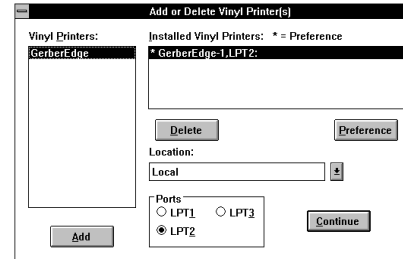
1. Use the printer cable to connect the EDGE to computer printer port LPT2 or LPT3.
2. Plug the power cord into the power cord receptacle.
3. Plug in and turn on the EDGE first, then the computer.

You must add the GERBER EDGE to the GRAPHIX ADVANTAGE GA Plot program or the OMEGA™ GSPPlot program before you can send a job to it.

► **To add the EDGE for use by the GA Plot program**

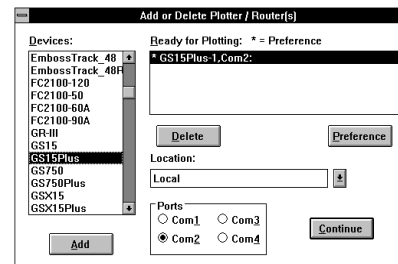
Use the GSP Setup program to add the EDGE and plotter to the GRAPHIX ADVANTAGE® Plot program.

1. Open the GSP Setup program.
2. Click on Setup in the menu bar.
3. Click on Vinyl Printer. The Add or Delete Vinyl Printer(s) dialog box appears.
4. In the Vinyl Printers list box, click on GERBER EDGE.
5. In the Ports list box, click on LPT2.
6. Click on Add. The EDGE is added to the Installed Vinyl Printers list box.
7. In the Installed Vinyl Printers list box, click on GERBER EDGE, and then click on Preference. The Set Preference dialog box opens.
8. Click on OK. The EDGE is shown as the default vinyl printer.
9. Click on Continue. The EDGE is added to the system as the default printer.



► **To add a plotter for use by the GA Plot program**

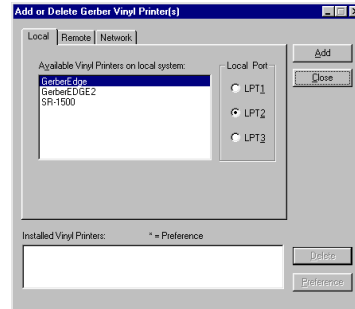
1. Click on Setup in the GSP program menu bar.
2. Click on Plotter. The Add or Delete Plotter/Router(s) dialog box appears.
3. In the Devices list box, click on the name of the plotter you will use to cut the printed job.
4. In the Ports list box, click on COM1, COM2, COM3, or COM4 to choose the port the plotter is connected to.
5. Click on Add. The plotter is added to the Ready for Plotting list box.
6. Click on Continue. The plotter is added to the system.
7. Exit the GSP Setup program.



Note: If the Plot Spooler is an icon on the Windows desktop, close out the icon so that when it is reopened, the new vinyl printer and plotter will be available.

► **To add the EDGE for use by OMEGA's GSPPlot program**

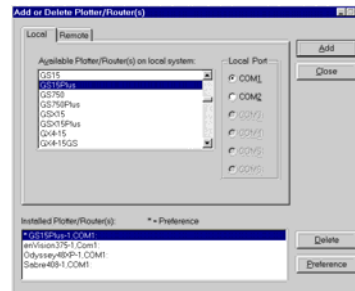
1. Right-click the GSPTray icon to open the Gerber Tray menu.
2. Click Install Vinyl Printer to open the Local tab of the Add or Delete Gerber Vinyl Printer(s) dialog box.
3. Click the appropriate printer from the Available Vinyl Printers on local system list.



4. Choose either LPT2 or LPT3 from the Local Port group box.
5. Click Add to open the Add – Name Device dialog box.
6. Either accept the name of the printer in the Device Name box or enter another.
7. Click OK. The name of the newly installed printer appears in the Installed Vinyl Printers section of the Add or Delete Vinyl Printer(s) dialog box.
8. Click Close.

► **To add a plotter for use by OMEGA's GSPPlot program**

1. Right-click the GSPTray icon to open the Gerber Tray menu.
2. Click Install Plotter/Router to open the Local tab of the Add or Delete Plotter/Router(s) dialog box.
3. Highlight the appropriate plotter or router from the Available Plotter/Router(s) on local system list.



4. Choose COM2, COM3, or COM4 from the Local Port group box.
5. Click Add to open the Add – Name Device dialog box.
6. Either accept the name of the plotter or router in the Device Name box or enter another.
7. Click OK. The name of the newly installed plotter or router appears in the Installed Plotter/Router(s) section of the Add or Delete Plotter/Router(s) dialog box.
8. Click Close.

Getting Started

Overview of the printing process

The GERBER EDGE prints jobs output by the GRAPHIX ADVANTAGE® Plot (GAPlot) program or the OMEGA GSPPlot program. For ease of using this document, both programs are referred to as the Plot Program.

Your design program provides the capability of assigning fill colors to shapes. These fill colors correspond to the GerberColor cartridges used by the EDGE. Your design program may also allow you to select the percent of tint, the size of halftone dots, and the color of vinyl. This information is stored in the job file and sent to the EDGE through the Plot program.

Using the Plot program, open the job file and make your normal plot selections. These selections are for both the EDGE and the plotter. Send the job to the EDGE for printing.

Note: Be certain that you select the plotter you plan to cut on prior to printing. If you change plotter selection after printing, cutting registration may be degraded.

During printing, prompts appear on the EDGE display telling you when to load the material and change the color cartridge. If more than one color is used in a job, the display prompts you to load each new color until the job is complete.

After a job is printed, it may be cut on a plotter. The only difference between cutting a printed job and cutting a vinyl job is that you must register the plotter knife exactly with the cutter registration mark printed on the material by the EDGE. Use the eyepiece provided in the EDGE accessory package to align the knife with the registration mark.

Note: A Slow Slew mode is a feature of some Gerber plotters. Slow Slew helps you align the knife with the print registration mark. GS 15™ and HS 15™ plotters and the Signmaker® IVB, the GSP SPRINT™II series, and the SuperSprint™ series require a firmware upgrade. Please contact your Gerber distributor for details.

Printing a sample job

Why not explore some of the capabilities of your EDGE now? In the following sequence you will print a black job on white vinyl. Your EDGE may include an alternate GerberColor foil cartridge. You may use this foil instead of the black foil to print the sample job. The plot (.PLT) file is already loaded on your system as part of the Plot program. Follow the instructions to print your first EDGE job.

There are five operations to perform when using the EDGE:

- Setting up the job
- Loading the material
- Loading the color cartridge
- Printing the job
- Cutting the printed job on the plotter

► To set up the job

1. Plug in and turn on the EDGE first, then the computer and plotter.

Note: See “Using the keypad and display” paragraph on page 35 for more information.

2. The EDGE display reads:



OFFLINE

3. Press ONLINE on the keypad. The display reads:



ONLINE

4. Press the HOME key once to rotate the drive sprockets to the home position. (The three closely spaced teeth face up.) You must press HOME before sending the job to the EDGE.
5. Open the Plot program. The Open dialog box appears.
6. In GA, navigate to the Jobs/Samples folder. In OMEGA navigate to the Gsp/Library/Sampler folder.
7. In the File Name list box, double-click on EDGEOL.PLT. The job is displayed in the working area.
8. Press F7 for the Plotter Select dialog box.
9. If necessary, click on the 15-inch plotter you plan to use for cutting the job to highlight and select it. Click on any other plotters to deselect them.

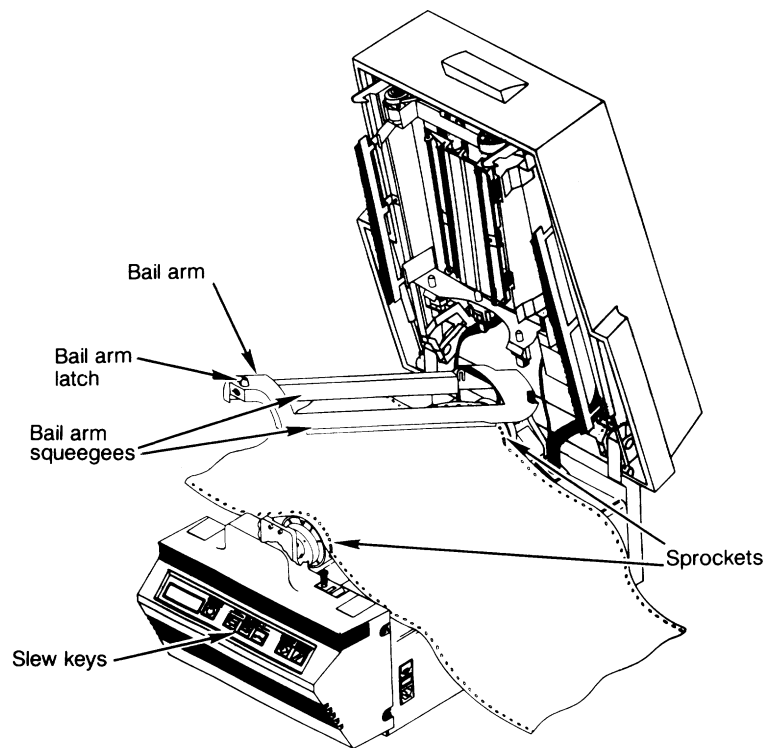
10. Click on GERBER EDGE to highlight and select it.
11. Click on OK.
12. Press F10 to send the job to the EDGE.

► **To load the material**

1. The display shows the material loading prompt:

Vinyl: WHITE

2. Push in the cover latch and raise the cover.
3. Push the bail arm latch toward the rear of the EDGE and lift the bail arm to the raised position.



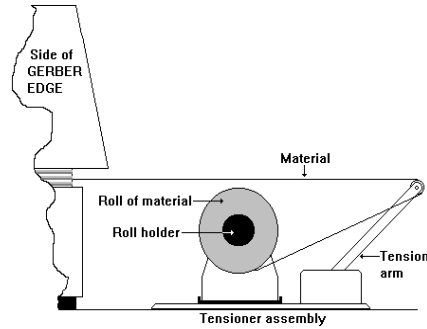
Loading material into the EDGE.

4. Clean the bail arm squeegees and platen using a clean, lint-free pad moistened with isopropyl alcohol. Allow to air dry before loading material.

5. Position the tensioner assembly next to the right (on/off switch) side of the EDGE as shown in the illustration.

6. Slide the roll of material onto the roll holder. Pull the end of the material away from the EDGE, then under and over the tension arm roller back toward the EDGE.

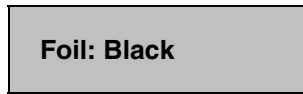
7. Seat the three-hole pattern in the vinyl over the three closely spaced teeth in each sprocket. Lower the bail arm and push the bail arm latch toward the rear of the EDGE so that the latch locks the bail arm down.



9. Slew the vinyl back and forth so that the squeegees clean the area to be printed. Leave a leader of at least 2" (5 cm) beyond the left squeegee.

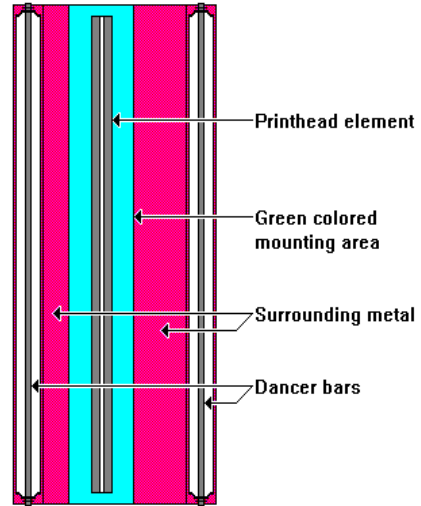
► **To load the color cartridge**

1. Press ONLINE on the keypad. The display shows the color foil to load.

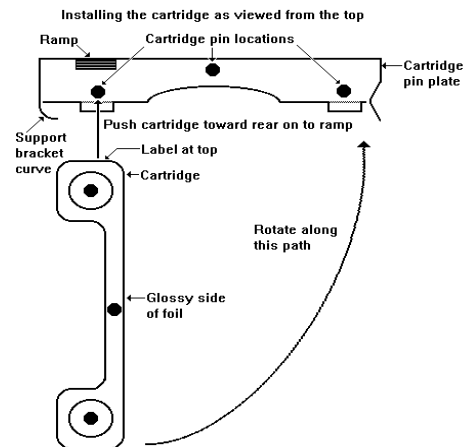
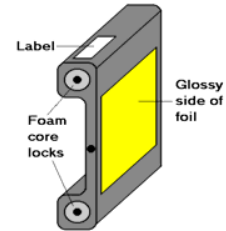


Note: Your EDGE may include an alternate GerberColor foil cartridge. You may use this sample foil instead of black foil.

2. Clean the printhead with the pen printhead cleaner or use a pad moistened with 98% or higher isopropyl alcohol. Do not soak the pad with alcohol or you may damage the printhead. Gently rub the entire length and width of the printhead and the surrounding metal. Dry with a clean, lint-free pad.



3. Clean both sides of the foil squeegee using a pad moistened with isopropyl alcohol. Allow to air dry.
4. Remove and discard the foam core locks from the color cartridge.
5. Hold the color cartridge vertically with the label facing toward the inside of the cover. Orient the cartridge so that the glossy side of the foil faces toward the right as shown in the illustration.
6. Insert the color cartridge toward the rear of the cover until it touches, then rides up on, the ramp.
7. Rotate the cartridge to the right until it covers the cartridge pin plate and the left side of the cartridge is behind the curve of the support bracket.
8. Release the three cartridge pins under the cartridge pin plate so that they secure the color cartridge in the head support.
9. Press the FOIL SLEW key until the cartridge pins snap into place and the foil moves.
10. Close the cover.



► **To print the job**

Note: There may be a pause after you press ONLINE before the printing starts.

1. Press ONLINE on the keypad.
2. The EDGE may go through a brief warm-up cycle. If so, the EDGE display reads:

WARMING UP

3. After the EDGE is warmed up, printing starts. When printing is complete, press RESET on the keypad. The display shows:

OFFLINE

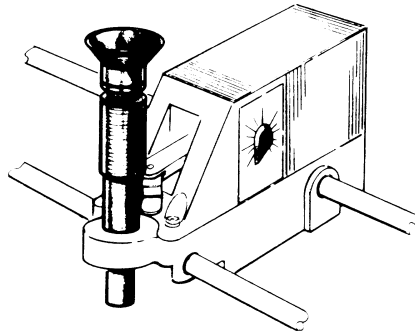
4. Slew the material out of the side of the machine toward the roll. Wind the job on the roll. Take the roll to the plotter.

► **To cut the printed job on a 15" sprocketed plotter**

1. Remove the tool from the plotter tool carriage.
2. Open the bail arm by lifting it up from the drum.
3. Use the keypad slew keys to slew the plotter drive sprockets so that the three closely spaced teeth are facing up.
4. Seat the three-hole pattern in the vinyl over the three closely spaced teeth in each sprocket and close the bail arm.
5. Slew the tool carriage and vinyl so that the registration mark is visible through the barrel of the tool carriage.
6. Activate slow slew by pressing the SLOW key.

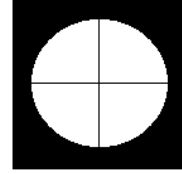
Note: The plotter beeps once when you enter the Slow Slew mode and beeps twice when you exit the Slow Slew mode.

7. Insert the eyepiece into the tool carriage as shown. Align the groove in the eyepiece with the key in the tool carriage so that the eyepiece seats all the way down (touching the vinyl) in the carriage.



The eyepiece installed in the tool carriage.

8. Sight through the eyepiece and slow slew the material so that the registration mark is exactly centered in the eyepiece as shown. You can slow slew one step at a time by tapping the SLEW key or continuously slow slew by pressing the SLEW key.



9. Remove the eyepiece from the tool carriage.
10. Put the knife in the tool carriage.
11. Press F8 on the keyboard to cut the job.
12. Press the plotter RUN SINGLE key when the plotter indicator light blinks.
13. When the job is cut, slew the vinyl out of the machine and weed the job.

Printing another sample job

In the following sequence you will print a red and black job on white vinyl. The plot (.PLT) file is already loaded on your system as part of the GA or OMEGA.

Note: You may substitute other foil colors for Ruby Red and Black when printing this sample job.

► To set up the job

1. If necessary, plug in and turn on the EDGE first, then the computer and the plotter.

Note: See "Using the keypad and display" paragraph on page 35 for more information.

2. The EDGE display reads:



OFFLINE

3. Press ONLINE on the keypad. The display reads:



ONLINE

4. Open the Plot program. If the previous job is still displayed in the Plot program working area, click on Open in the File menu. In either case, the Open dialog box appears.
5. In GA navigate to the Jobs/Samples folder. In OMEGA navigate to the Gsp/Library/Sampler folder.
6. In the File Name list box, double-click on JAKES.PLT. The job is displayed in the working area.
7. Press F7 for the Plotter Select dialog box.
8. If necessary, click on the 15-inch plotter you plan to use for cutting the job to highlight and select it. Click on any other plotters to deselect them.
9. Click on EDGE to highlight and select it.
10. Click on OK.
11. Press F10 to send the job to the EDGE.

► To load the material

1. The display shows the material loading prompt:



Vinyl: WHITE

2. Push in the cover latch and raise the cover.
3. Push the bail arm latch toward the rear of the EDGE and lift the bail arm to the raised position.
4. Clean the bail arm squeegees and platen using a clean, lint-free pad moistened with isopropyl alcohol. Allow to air dry before loading material.
5. Press the HOME key once to rotate the drive sprockets to the home position. (The three closely spaced teeth face up.)
6. Position the tensioner assembly next to the right (on/off switch) side of the EDGE and slide the roll of white vinyl material onto the roll holder. Pull the end of the material away from the EDGE, then under and over the tension arm roller toward the side of the EDGE.
7. Seat the three-hole pattern in the vinyl over the three closely spaced teeth in each sprocket. Lower the bail arm and push the bail arm latch toward the rear of the EDGE so that the latch locks the bail arm down.
8. Slew the vinyl back and forth so that the squeegees clean the area to be printed. Leave a leader of at least 2" (5 cm) beyond the left squeegee.

► To load the color cartridge

1. Press ONLINE on the keypad. The display shows:



Foil: RUBY RED

2. If necessary, remove an installed color cartridge by pushing down and rotating the three cartridge pins under the cartridge plate. Rotate the color cartridge to the left from behind the curve of the support bracket and remove the color cartridge.
3. Clean the printhead with the pen printhead cleaner or use a pad moistened with 98% or higher isopropyl alcohol. Do not soak the pad with alcohol or you may damage the printhead. Gently rub the entire length and width of the printhead and the surrounding metal. Dry with a clean, lint-free cloth.
4. Clean both sides of the foil squeegee using a pad moistened with isopropyl alcohol. Allow to air dry.
5. Remove and discard the foam core locks from the color cartridge.

6. Hold the color cartridge vertically with the label facing toward the inside of the cover. Orient the cartridge so that the glossy side of the foil faces toward the right.
7. Insert the color cartridge toward the rear of the cover until it touches, then rides up on, the ramp.
8. Rotate the cartridge to the right until it covers the cartridge pin plate and the left side of the cartridge is behind the curve of the support bracket.
9. Release the three cartridge pins under the cartridge pin plate so that they secure the color cartridge in the head support.
10. Press the FOIL SLEW key until the color cartridge snaps into place and the foil moves.
11. Close the cover.

► **To print the job**

Note: There may be a pause after you press ONLINE before the printing starts.

1. Press ONLINE on the keypad.
2. The EDGE may go through a brief warm-up cycle. If so, the EDGE display reads:



WARMING UP

3. After the EDGE is warmed up, printing starts. After the EDGE prints the first color, it rewinds the vinyl and the display shows:



Foil: BLACK

► **To change the color cartridge**

1. Raise the cover.
2. Remove the ruby red color cartridge by pushing down and rotating the three cartridge pins under the cartridge plate. Rotate the color cartridge to the left from behind the curve of the support bracket and remove the color cartridge.
3. Gently wipe the vinyl, vinyl squeegees, foil squeegee, and printhead with a clean, dry, lint-free cloth.
4. Load the black color cartridge by holding it vertically with the label facing toward the inside of the cover. Orient the cartridge so that the glossy side of the foil faces toward the right.

5. Insert the color cartridge toward the rear of the cover until it touches, then rides up on, the ramp.
6. Rotate the cartridge to the right until it covers the cartridge pin plate and the left side of the cartridge is behind the curve of the support bracket.
7. Release the three cartridge pins under the cartridge pin plate so that they secure the color cartridge in the head support.
8. Press the FOIL SLEW key until the cartridge pins snap into place and the foil moves.
9. Close the cover and press ONLINE on the keypad.
10. When the printing of the second color is complete, press RESET on the keypad. The display shows:



OFFLINE

11. Slew the material out of the side of the machine toward the roll. Wind the job on the roll. Take the roll to the plotter.

► **To cut the printed job on the 15" sprocketed plotter**

1. Remove the tool from the plotter tool carriage.
2. Open the bail arm by lifting it up from the drum.
3. Use the keypad slew keys to slew the plotter drive sprockets so that the three closely spaced teeth are facing up.
4. Seat the three-hole pattern in the vinyl over the three closely spaced teeth in each sprocket and close the bail arm.
5. Slew the tool carriage and vinyl so that the registration mark is visible through the barrel of the tool carriage.
6. Activate slow slew by pressing the SLOW key.

Note: The plotter beeps once when you enter the Slow Slew mode and beeps twice when you exit the Slow Slew mode.

7. Insert the eyepiece into the tool carriage. Align the groove in the eyepiece with the key in the tool carriage so that the eyepiece seats all the way down (touching the vinyl) in the carriage.
8. Sight through the eyepiece and slow slew the material so that the registration mark is exactly centered in the eyepiece. You can slow slew one step at a time by tapping the SLEW key or continuous slow slew by pressing the SLEW key.

9. Remove the eyepiece from the tool carriage.
10. Put the knife in the tool carriage.
11. Press F8 on the keyboard to cut the job.
12. Press the plotter RUN SINGLE key when the plotter indicator light blinks.
13. When the job is done, slew the vinyl out of the machine and weed the job.

Using the GERBER EDGE

There are five operations to perform when using the EDGE:

- Setting up the job
- Loading the material
- Loading the color cartridge
- Printing the job
- Cutting the printed job on the plotter

Setting up the job

Setting up the job involves turning on the equipment, opening the print file in GRAPHIX ADVANTAGE or OMEGA Plot, and sending the job to the EDGE.

Step 2 below is necessary for each new job if you have not selected a 15-inch plotter and the EDGE as preferences in the Plotter/Printer Select dialog box of Plot. **Be certain that you select the plotter you plan to use prior to printing. If you change plotter selection after printing, cutting registration may be degraded.** If you open a file that was previously printed and cut, the past parameters and plotter and printer selections are automatically loaded with the file. In that case, step 2 is not necessary.

► To set up the job

Note: See “Using the keypad and display” paragraph on page 35 for more information.

1. Make sure that the EDGE is turned on first before you turn on the computer. The EDGE display shows **ONLINE**. You must be in the Plot program and have the file open that you want to print.
2. Press F7 to open the Plotter/Printer Select dialog box and choose the plotter you plan to use for cutting and the EDGE for printing. Deselect all other plotters. Click on OK or Preference.
3. Use the Plot program to enter the parameters for printing and cutting. This includes parameters such as axis swap and repeats.
4. Press F10 to send the job to the EDGE.

Loading the material

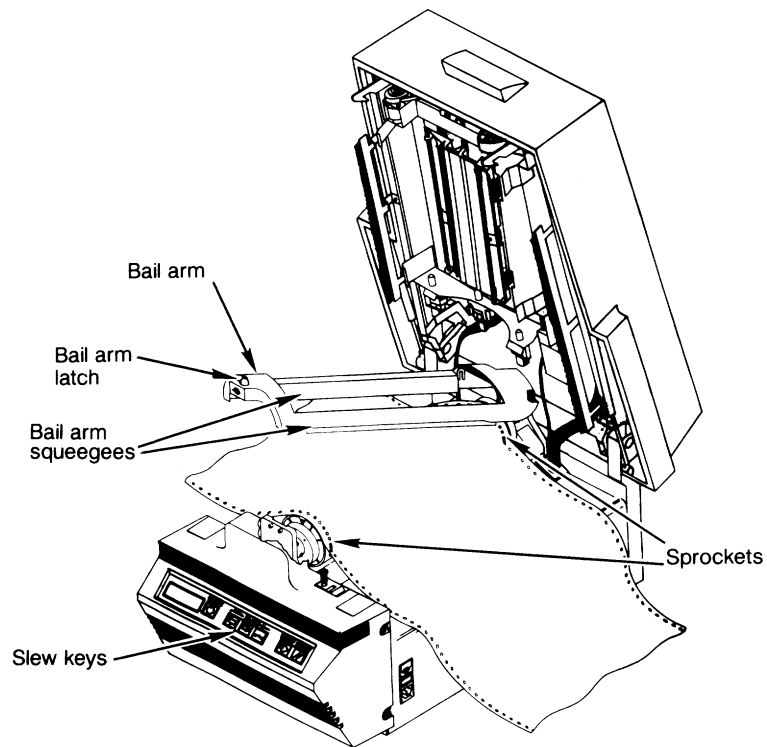
Before the material is loaded it must be clean. Refer to “The material” paragraph of the “Maintaining Print Quality” section on page 26 for more information.

► To load the material

1. The EDGE displays a prompt:

Vinyl: (color)

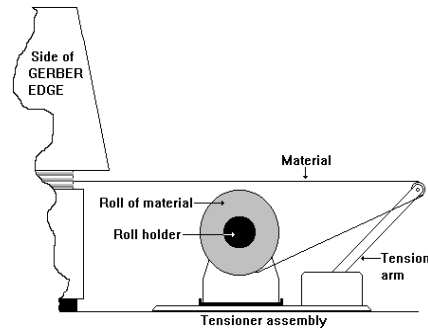
2. Push in the cover latch and raise the cover.
3. Push the bail arm latch toward the rear of the EDGE and lift the bail arm to the raised position.



Loading the material into the EDGE.

4. Clean the bail arm squeegees using a pad moistened with isopropyl alcohol. Allow to air dry before loading material.

5. Press the HOME key once to rotate the drive sprockets to the home position. (The three closely spaced teeth face up.)
6. Position the tensioner assembly next to the right (on/off switch) side of the EDGE as shown in the illustration.
7. Slide the roll of material onto the roll holder. Pull the end of the material away from the EDGE, then under and over the tension arm roller back toward the EDGE.
8. Seat the three-hole pattern in the vinyl over the three closely spaced teeth in each sprocket. Lower the bail arm and push the bail arm latch toward the rear of the EDGE so that the latch locks the bail arm down.
9. Slew the vinyl back and forth so that the squeegees clean the area to be printed. Leave a leader of at least 2" (5 cm) beyond the left squeegee.



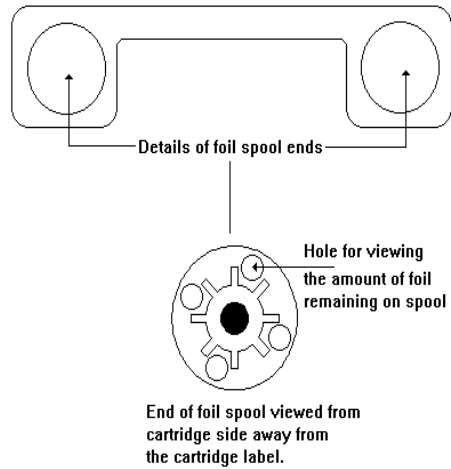
Loading the color cartridge

The printhead, foil squeegee, and color cartridge must be cleaned before the color cartridge is loaded. Refer to the paragraphs on cleaning the foil (page 26) and the printhead (page 27) in the “Maintaining Print Quality” section of this manual for instructions.

The EDGE displays a prompt to load the foil color cartridge. If you selected a primer in the design program, the prompt is **PRIMER FOIL: (COLOR)**. If you selected Abrasion Guard™ in the Plot program, the prompt is **FOIL: ABRASION GUARD**.

Be sure to remove and discard the core plugs from a new color cartridge prior to use.

You can estimate if you have enough foil on a cartridge to print a job by looking through the viewing hole at the amount remaining on the cartridge spool as shown in the illustration.



Estimate the amount of foil remaining on the cartridge.

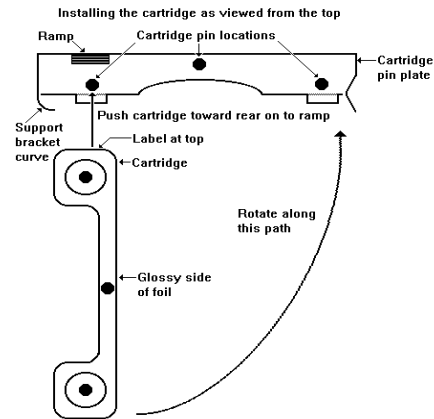
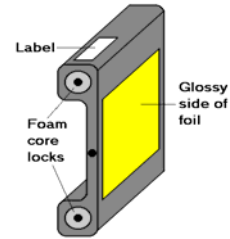
► **To load the color cartridge**

1. Press ONLINE on the keypad. The display shows:

Foil: (color)

2. If necessary, remove an installed color cartridge by pushing down and rotating the three cartridge pins under the cartridge plate. Rotate the color cartridge to the left from behind the curve of the support bracket and remove the color cartridge.
3. Clean the printhead and foil squeegee according to the cleaning "The printhead and foil squeegee" procedure (page 27) in the "Maintaining Print Quality" section of this manual.

4. Remove and discard the foam core locks from the color cartridge. Clean the color cartridge according to the cleaning “The foil” procedure (page 26) in the “Maintaining Print Quality” section of this manual.
5. Hold the color cartridge vertically with the label facing toward the inside of the cover. Orient the cartridge so that the glossy side of the foil faces toward the right as shown in the illustration.
6. Insert the color cartridge toward the rear of the cover until it touches, then rides up on, the ramp.
7. Rotate the cartridge to the right until it covers the cartridge pin plate and the left side of the cartridge is behind the curve of the support bracket.
8. Release the three cartridge pins under the cartridge pin plate so that they secure the color cartridge in the head support.
9. Press the FOIL SLEW key until the cartridge pins snap into place and the foil moves.
10. Close the cover.



Printing the job

Printing starts after you press ONLINE. There may be a pause before printing starts or the keypad display may show **WARMING UP**. The printhead automatically warms to a temperature of 77° F (25° C). Depending upon the room temperature, the warmup time may be instant to approximately 2 minutes.

During multiple color printing, after a color is printed the vinyl automatically feeds back out of the EDGE to the registration mark and the display shows the **Foil: (color)** prompt for the next color. This sequence continues until all colors are printed. When all the colors are printed, the EDGE stops and a new job can be started or the job can be plotted.

If you run out of foil while printing a job, the EDGE stops printing and the display shows **CHECK FOIL**. Raise the cover and load the same foil currently in the EDGE according to the “Loading the color cartridge” paragraph on page 21, then press ONLINE. The EDGE will automatically register itself to start printing where the original printing stopped.

Note: To ensure correct registration, the EDGE is set to overlap the old foil with the new foil by 15 pixels. You may reset this amount to any value between 5 and 25 pixels by following the instructions in “Changing the EDGE overlap setting” on page 42.

When printing multiple color jobs, remember to:

- Wipe the material with a dry, lint-free cloth between each color.
- Clean the printhead, platen, foil squeegee, and bail arm squeegees between each job.
- Clean the printhead between each color if the job is longer than 10' (3 m).

When printing multiple jobs on the same material, wait until all jobs are printed before cutting them. This technique saves material and time.

► **To print the job**

Note: There may be a pause after you press ONLINE before the printing starts.

1. Press ONLINE on the keypad. Printing starts. After the EDGE prints the first color, it rewinds the vinyl and the display prompts for the next color. Change the color cartridge when prompted.
2. When the printing of all colors is complete, press RESET on the keypad. The display shows:



OFFLINE

3. When all jobs are done, slew the material out of the machine toward the roll. Wind the jobs on the roll. Take the roll to the plotter.

Cutting the printed job on the plotter

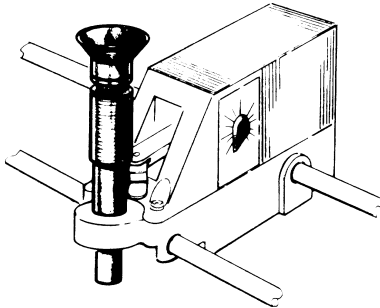
When the job is designed in the Composer program, the printed shapes and cut shapes are specified. When printing from the Plot program, the basic parameters such as axis swap and repeat are set. Do not change these parameters after printing and before cutting. If you change them, the printed job and the cut job will not match. Cut the jobs in the order you printed them. Do not change the plotter selection after printing because cutting registration may be degraded.

► **To cut the printed job on a 15" sprocketed plotter**

1. Take the tool out of the plotter tool carriage.
2. Load the material in the plotter according to your plotter or console instructions.
3. Slew the tool carriage and material so that the registration mark is visible through the barrel of the tool carriage.
4. Activate slow slew by pressing the SLOW key.

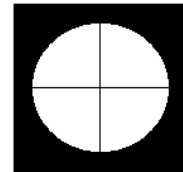
Note: The plotter beeps once when you enter the Slow Slew mode and beeps twice when you exit the Slow Slew mode.

5. Insert the eyepiece into the tool carriage as shown. Align the groove in the eyepiece with the key in the tool carriage as shown so that the eyepiece seats all the way down (touching the vinyl) in the carriage.



The eyepiece installed in the tool carriage.

6. Sight through the eyepiece and slow slew the material so that the registration mark is exactly centered in the eyepiece as shown. You can slow slew one step at a time by tapping the SLEW key or continuously slow slew by pressing the SLEW key.
7. Remove the eyepiece from the tool carriage.
8. Put the knife in the tool carriage.
9. Cut the job according to the Plot program and plotter or console instructions.



Note: If the cut lines of the job do not match the print job, check that proper cut registration was established at step 6. When properly centered, the knife cuts precisely on the cross hairs of the registration mark before cutting the job. If the cross hairs are not perfectly cut, the job will not be perfectly cut either.

Maintaining Print Quality

Quality printing and cutting depends on several factors:

- The material and the foil must be clean.
- The printhead, squeegees, platen, sprockets, and cassette pins must be clean.
- The printed image must be exactly registered with the plotter knife. You must cut the vinyl on the plotter that you selected prior to printing.

Cleaning

The material, foil, printhead, squeegees, platen, sprockets, and cassette pins must be clean.

The material

Gerber has created a new material designation called *EDGE READY*[™]. *EDGE READY* materials are processed, prepared, and qualified by the material manufacturer for optimum image quality when printing with the *EDGE*. *EDGE READY* materials are the only materials recommended for use with the *EDGE*. *EDGE READY* material is identified by an *EDGE READY* symbol inside the roll and on the outside of the box.

To remove any surface dust or dirt, gently wipe the material with a clean, dry, lint-free cloth before printing and between foil colors.

When not using the material, store it in the plastic wrap it originally came in. Following this advice should keep print quality high and material loss low.

The foil

Keep the color cartridge in its sleeve and store it in a clean and protected environment when it is not installed in the *EDGE*. Store the cartridge at 40 to 60 percent relative humidity in a temperature range of 40° to 90° F (4° to 32° C). Do not store the color cartridge in direct sunlight.

The foil in the color cartridge can get dirty in two ways: in storage (where dust is attracted to it because of static charges) and during use. If the color cartridge is not loaded in the EDGE, use a compressed air, ultra-filtered, non-residue dust remover, such as Chemtronics® Ultrajet® 2000 or equivalent, to quickly spray the spool ends and both sides of the foil in the color cartridge before loading the color cartridge in the EDGE. Do not soak the foil – spray it just enough to blow the dust off the foil. If the color cartridge is in the EDGE, use the FOIL SLEW key to advance the foil several inches so that the dirt buildup is rolled beyond the printhead and into the color cartridge.

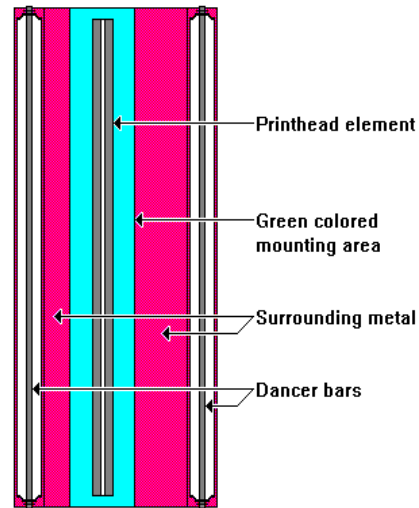
The printhead and foil squeegee

There are two times to clean the printhead: normal cleaning and removing contamination buildup.

Normal cleaning refers to cleaning the printhead before each job. If a job is longer than 10' (3m), clean the printhead before loading each color cartridge.

Use the pen printhead cleaner or a pad moistened with 98% or higher isopropyl alcohol to gently rub the entire length and width of the printhead as shown in the illustration. Do not soak the pad with alcohol or you may damage the printhead. Dry the printhead with a clean, lint-free cloth.

Contamination buildup occasionally occurs on the printhead element itself (the brown strip surrounded by the green mounting area in the printhead). When this happens, printing quality is degraded and a more thorough cleaning is necessary. We suggest cleaning the printhead element weekly or as required.



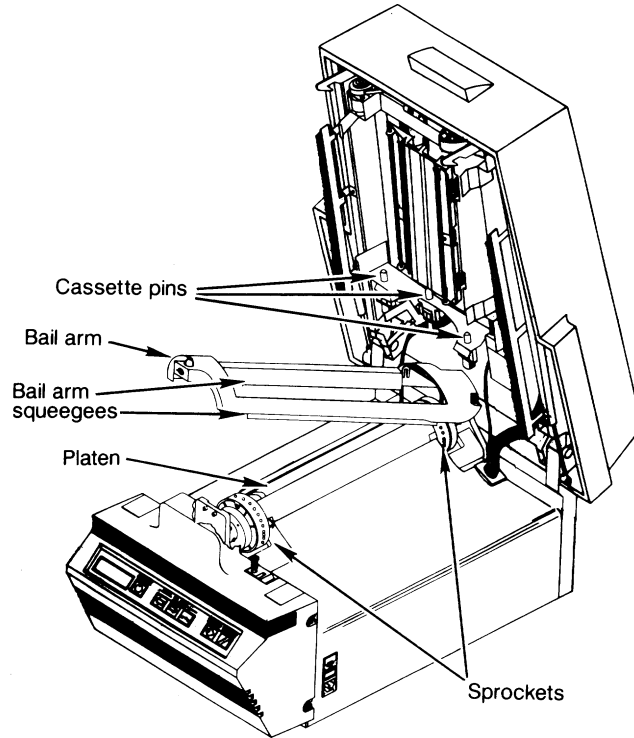
Use the Thermal Printhead Cleaning Kit provided with your EDGE. If you need additional cleaning kits, contact your Gerber distributor or the Gerber Customer Service Department.

Clean both sides of the foil squeegee with a lint-free cloth moistened with isopropyl alcohol. Allow to air dry before loading a color cartridge.

Note: Isopropyl alcohol may discolor the squeegee over time. Discoloring does not affect the operation of the squeegee.

The platen

Wipe the platen with a clean, lint-free pad moistened with isopropyl alcohol to remove any debris. Allow to air dry before loading vinyl. Refer to the illustration to locate the areas to clean.



Cleaning the platen, bail arm, squeegees, sprockets, and cassette pins.

The bail arm, squeegees, sprockets, and cassette pins

Wipe the bail arm squeegees and bail arm with a clean, lint-free cloth moistened with isopropyl alcohol. Use a small brush, such as a toothbrush, dipped in isopropyl alcohol to clean the sprockets and cassette pins. Do not soak the brush in alcohol so that excess alcohol drips into the EDGE. Allow the sprockets and pins to air-dry before loading vinyl. Refer to the illustration to locate the areas to clean.

Note: Isopropyl alcohol may discolor the squeegees over time. Discoloring does not affect the operation of the squeegees.

Correcting printing problems

Occasionally a job may not print perfectly. The following information tells you how to correct some printing problems.

- **A line through the length of a job.** Clean the printhead and foils. If this problem persists contact Gerber Field Service.
- **Imperfections in the printing, such as voids, hair lines, or small unprinted areas.** Wipe the vinyl with a clean, lint-free cloth. If imperfections are present in the entire job, the printhead is dirty. Clean the printhead as described in “Cleaning the printhead and foil squeegee” on page 27.
- **Lines in the job that are not on the X or Y axis (wrinkling).** Usually this appearance is accompanied by a pulling or crinkling sound while printing. The foil is wrinkled. Make sure the dancer bars are free. Check to see that the **C** clips at each end of the dancer bar are not jammed in the slot of the dancer bar frame. (Refer to “The printhead assembly” paragraph on page 34 for the location of the dancer bars.)
- **Opacity problems, such as a light color (like yellow) not covering a dark color (like purple).** Print a white or gray undercoat on the vinyl before printing the other colors in the job. To apply the undercoat, use the Primer feature in Composer as described in the *GRAPHIX ADVANTAGE Reference Manual* or the OMEGA Help system.
- **The top or bottom of a job consistently darker than the other.** This may be a printhead pressure problem. Please call your distributor or the Gerber Field Service Department.
- **Light spots in a repeating pattern in the job.** Clean the platen. If the problem persists, please call your distributor or the Gerber Field Service Department.
- **Poor print registration.** Do not butt colors in a job. Use traps, bleeds, chokes, and spreads to improve registration as you prepare the job in your design program. Ensure that the vinyl has equalized to the ambient temperature and humidity before printing.
- **Stretched sprocket holes in the vinyl.** Use materials that are Gerber-approved for the EDGE. Ensure that the vinyl has equalized to the ambient temperature and humidity before printing. If the problem persists, please call your distributor or the Gerber Field Service Department.

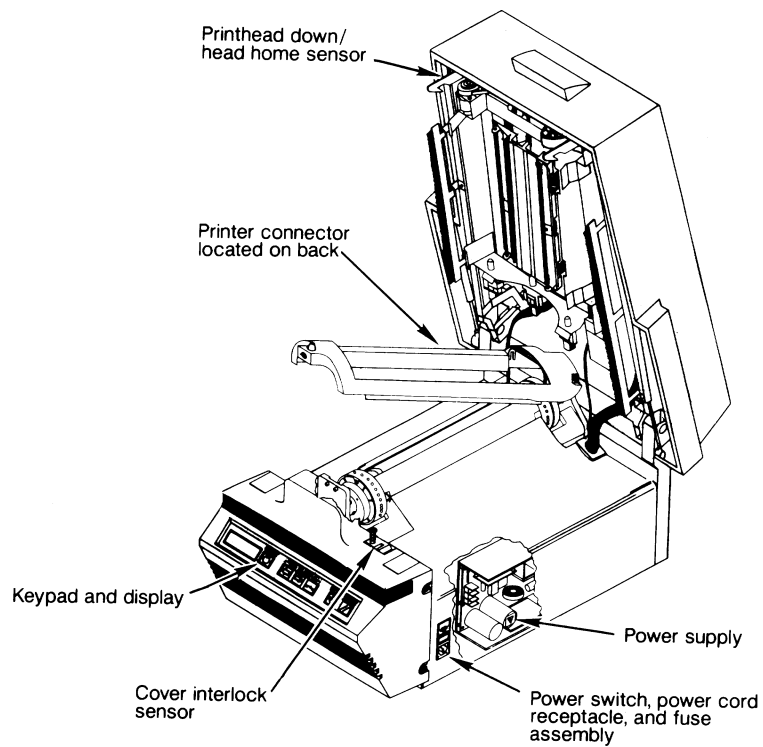
- **Lifting printed images from the material or lifting material from the liner.** A job printed on vinyl, film, or sheeting can be sensitive to transfer tape pressure. Wait at least 15 minutes before applying transfer tape to the printed vinyl, film, or sheeting. Use only Gerber Standard Tack Application Tape. Do not stack printed materials print-side to print-side. Stack the printed side contacting the liner side of another piece of material or use a paper interleaf between the layers.

Mechanical Description

Parts and their functions

The major parts of the EDGE are the chassis, the platen assembly, and the printhead assembly.

The chassis

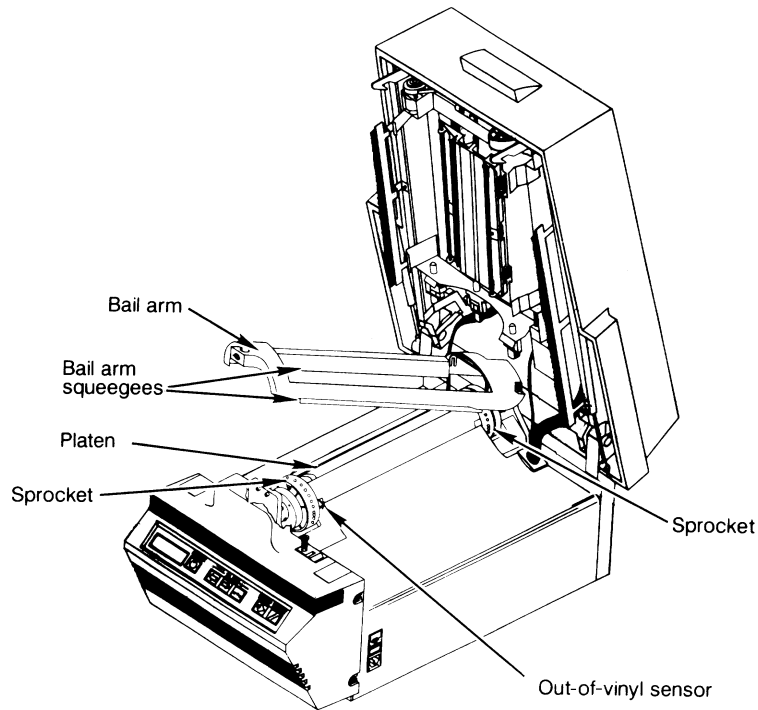


The chassis.

The chassis consists of the following parts:

- **The keypad and display.** The keypad and display are used to enter operator responses and to display instructions for the operator. For use of the keypad and display, refer to the “Using the keypad and display” on page 35.
- **Power switch, power cord receptacle, and parallel printer connector.** The power switch and power cord receptacle are located on the right side. The power cord is inserted in the power cord receptacle. The printer connector is located on the back and is used to connect the EDGE to the computer.
- **The power supply.** The power supply is a universal, auto-ranging power supply capable of operating from 60 to 132 volts, or 180 to 264 volts, on 50 to 60 Hz.
- **The cover interlock sensor.** The cover interlock sensor prevents EDGE operation if the cover is not completely closed. It is located on the top front of the chassis.
- **The printhead down/head home sensor.** The printhead down/head home sensor reads when the printhead is contacting the platen. If this sensor is not activated, the EDGE will not operate.

The platen assembly

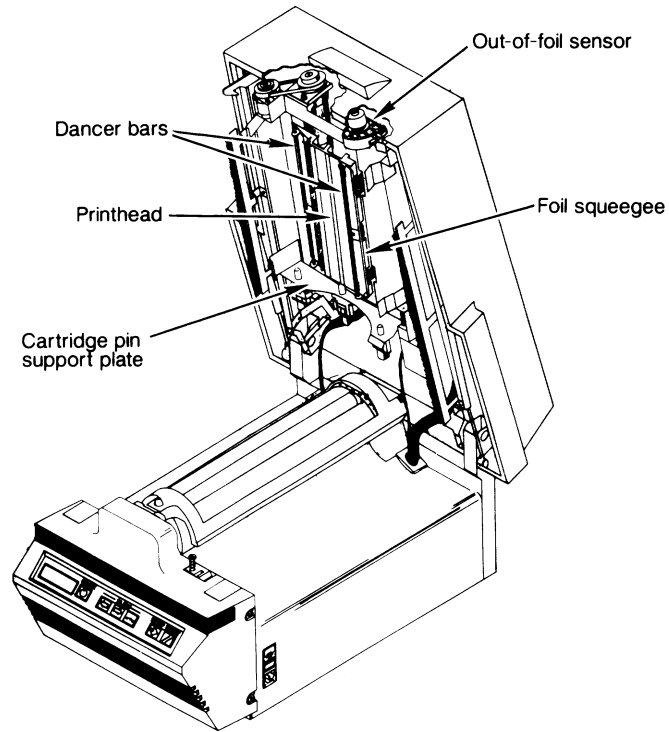


The platen assembly.

The platen assembly consists of the following parts:

- **The platen.** The platen is the rubber roller that presses the material and foil tightly between itself and the printhead.
- **The sprockets.** The teeth in the drive sprockets use the holes in the material to transport the material through the EDGE.
- **The bail arm.** The bail arm holds the material in contact with the drive sprockets. The bail arm squeegees clean the area to be printed.
- **The out-of-vinyl sensors.** The EDGE will not operate if vinyl is not loaded or if it runs out of vinyl during a job.

The printhead assembly

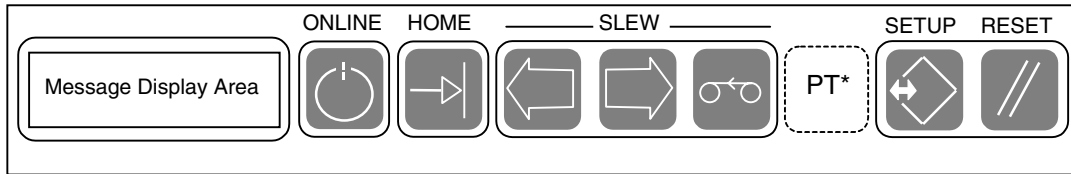


The printhead assembly.

The printhead assembly consists of the following:

- **The printhead.** The thermal printhead heats the foil and presses it tightly against the platen.
- **The foil squeegee.** The foil squeegee cleans the back of the foil in the color cartridge.
- **The color cartridge.** The color cartridge holds the roll of foil. The color cartridge is held in the printhead assembly by three cartridge pins on the cartridge pin support plate at the bottom.
- **The dancer bars.** These bars are free moving. They help provide tension and prevent wrinkling the foil.
- **The out-of-foil sensor.** When all the foil in the color cartridge is used, the EDGE displays a check foil message alerting you to replace the color cartridge.

Using the keypad and display



The keypad and display, shown above, are used to change operation modes, to enter operator responses and commands, and to display instructions for the operator. There are eight keys on the keypad:



The **ONLINE** key sets the EDGE online, acknowledges prompts, and starts printing. It is also used to interrupt printing and enter the Paused mode, and to restart printing from the Paused mode.



The **HOME** key rotates the drive sprockets to the home position (with the three closely spaced teeth facing up). Press it to home the drive sprockets.



The two **VINYL SLEW** keys move the material forward and backward. Vinyl slewing stops when the key is released. The VINYL SLEW keys work when the EDGE is offline, or when online but waiting for you to load a new color cartridge. The keys are also used to make selections in the Setup menu.



The **FOIL SLEW** key advances the foil in the color cartridge. The FOIL SLEW key works when the EDGE is offline, or when online but waiting for you to load a new color cartridge. Foil slewing stops when the key is released.



The **PRINT TEST** is a hidden key located between the FOIL SLEW key and the SETUP key. (A hidden key is an unlabeled area of the keypad. In the keypad illustration above, the hidden key is indicated by a dotted line.) Pressing the PRINT TEST key once continuously prints the test pattern selected in the Setup menu. Pressing the RESET key stops printing.



The **SETUP** key opens the Setup menu, which allows you to change the print test pattern, the checksum, or the overlap setting. Pressing the RESET key returns the EDGE to Offline.



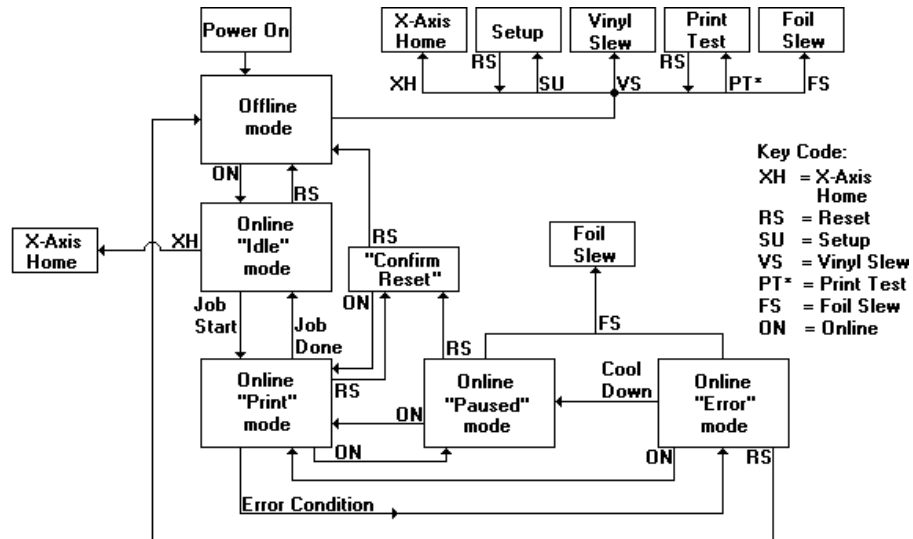
The **RESET** key stops a job and sets the EDGE offline. The RESET key is also used to return to Offline from the Setup menu and Print Test. When a job is interrupted with the RESET key, the display will read **CONFIRM RESET**. To restart the job, press ONLINE. To terminate it, press RESET again.

The message display area shows the mode (Offline, Online, or Paused) and the Setup menu status. It also shows operator prompts and error messages. Refer to the "Troubleshooting" section on page 43 for the response to operator prompts and error messages.

Note: If a message appears in the display which is not expected either in a procedure or in the Troubleshooting section, please contact your distributor or the Gerber Field Service Department for assistance.

Firmware overview

The EDGE is controlled by an internal program called *firmware*. The following block diagram outlines firmware functions by showing the relationships among modes and keys. The block diagram is explained in the following paragraphs. The text in the paragraphs uses the key code abbreviations given in the block diagram. In the block diagram, the hidden PRINT TEST key is shown as *PT**, but is not actually labeled on the keypad.



Offline mode

When the EDGE is turned on (Power On), the EDGE is in the Offline mode. While off line, you can press keys to slew the vinyl (VS) or the foil (FS), or set Home (XH). Slewing stops when the key is released. Check the printing ability and printhead cleanliness by pressing the PRINT TEST (PT*) key. To stop the print test, press the RESET (RS) key. To change the EDGE checksum, overlap setting, and print test pattern, press the SETUP (SU) key to enter the Setup menu. After making changes, press the RESET key to return to the Offline mode. For additional information about the Setup menu, refer to the “Setup Menu” paragraph on page 39.

Online Idle mode

While off line, pressing the ONLINE (ON) key puts the EDGE in the Online Idle mode and the EDGE is ready to print. Pressing the RESET (RS) key returns to the Offline mode. When the Plot program sends a job for printing, the EDGE enters the Online Print mode.

Online Print mode

The EDGE stays in the Online Print mode until one of four things happens:

- Printing is complete and the EDGE returns to the Online Idle mode.
- You press the RESET (RS) key. The job pauses and the display asks you to **CONFIRM RESET**.
- You press the ONLINE (ON) key and enter the Online Paused mode.
- An error occurs, an error message is displayed in the message display area, and the EDGE enters the Online Error mode.

Online Paused mode

Pressing the ONLINE (ON) key or the RESET (RS) key while printing puts the EDGE in the Online Paused mode. The job stops printing and you can:

- look at the job while it is still in the EDGE and before printing is complete
- slew the foil (FS)

To restart printing at the same location where printing was interrupted, press the ONLINE (ON) key. To abort the job, press the RESET (RS) key. The display will ask you to **CONFIRM RESET**. If you press RESET (RS) again, the job aborts and the printer returns to the Offline mode. If you press ONLINE (ON), the job resumes.

Note: To ensure correct registration when printing is resumed, the EDGE is set to overlap the foil (by 15 pixels) at the position where it was interrupted. You may reset this amount to any value between 5 and 25 pixels by following the instructions in “Changing the EDGE overlap settings” on page 42.

Online Error mode

If an error occurs while printing, printing stops, an error message displays in the message display area, and the EDGE enters the Online Error mode. A list of possible messages and your response to each is in the “Troubleshooting” section of this manual (page 43).

After taking corrective action, press the ONLINE (ON) key to restart printing. If the error is non-recoverable, you must press the RESET (RS) key. The EDGE returns to the Offline mode and you must resend the job from the Plot program.

*Note: If the display message is **Thermistor Error**, no immediate action is required. A time delay allows the printhead to cool down. When the printhead is sufficiently cool, the **Paused** message displays on the keypad. Press the ONLINE (ON) key to restart printing.*

Before pressing the ONLINE key to restart printing, you can:

- look at the job while it is still in the EDGE and before printing is complete
- slew the foil (FS)

Resetting to factory parameters

The EDGE is set to certain parameters at the factory. If you change these settings, or if an incorrect checksum alters the settings, the EDGE may not operate properly. If you suspect a problem, reset the EDGE to factory parameters and try your job again. If you still have a problem, contact the Gerber Field Service Department.

► To reset the EDGE factory parameters

1. Turn off the EDGE.
2. Press and hold the RESET key.
3. Turn on the EDGE and keep the RESET key pressed until the display reads **OFFLINE**.
4. Release the RESET key. The EDGE is reset to factory parameters.

Setup menu

When you press the SETUP (SU) key from the Offline mode, the EDGE enters the Setup menu. The Setup menu allows you to change the print test pattern, the EDGE checksum, or the amount of overlap when restarting a job after a pause. To change the print test pattern, repeatedly press the Setup key until the keypad display reads **TEST PATTERN** followed by the test pattern number. Press either VINYL SLEW key to step through the test pattern choices, then press the RESET (RS) key to return to the Offline mode.

Note: There are additional selections in the Setup menu that are used for Gerber diagnostic purposes only. If you go beyond the menu selection you want, repeatedly press the SETUP key until that selection appears again in the display. Do not change any settings except for checksum, test pattern, or overlap without first consulting the Gerber Field Service Department.

There are special reasons for using the SETUP key regarding the checksum setting:

- The checksum setting of the EDGE must be the same as the checksum setting of the Gerber software release.
- The checksum setting of the EDGE must be the same as the checksum setting embedded in the spool file being printed.

Matching the checksum of the EDGE to the Gerber software

<i>If the Gerber software release installed on your computer is:</i>	<i>Then the EDGE checksum must be set to:</i>
GA 4.3, GA 6.0 or higher, or OMEGA	OFF (This is the factory setting. You do not have to change the setting.)
4.1	ON (You must change the setting.)

If the EDGE checksum is not set correctly, you will not be able to print on the EDGE and you will get a **DATA ERROR** message on the keypad display every time you send a job.

Matching the checksum of the EDGE to the Spool File

<i>If the spool file you are printing was saved in Gerber software release:</i>	<i>Then the EDGE checksum must be set to:</i>
GA 4.3, GA 6.0 or higher, or OMEGA	OFF (This is the factory setting. You do not have to change the setting.)
4.1	ON (You must change the setting.)

If the checksum settings of the saved spool file and the EDGE are not the same, you will get a **DATA ERROR** message on the keypad display every time you send one of these files for printing. You have two choices:

- Rerender GA 4.1 spool files in GA 4.3 so that they are now GA 4.3 files. Refer to the Gerber software reference manual for information on creating spool files.
- Set the EDGE checksum to ON when printing GA 4.1 spool files.

Note: This situation applies only to spool files. Files originally created in GA 4.1 will print as GA 4.3 files if they were not saved as spool files.

Changing the EDGE checksum setting for GA 4.1

Changing the EDGE checksum setting consists of opening the Setup menu, setting the checksum to OFF or ON, and turning the EDGE off and on to complete the checksum change. The checksum is toggled OFF or ON by pressing either Vinyl Slew key.

► To change the EDGE checksum setting

1. Plug in and turn on the EDGE first, then the computer.
2. The EDGE display reads **OFFLINE**.
3. Repeatedly press the Setup key until the display reads **CHECKSUM** followed by **ON** or **OFF**.

Note: There are additional selections in the Setup menu that are used for Gerber diagnostic purposes only. If you go beyond the menu selection you want, repeatedly press the SETUP key until that selection appears again in the display. Do not change any settings except for checksum, test pattern, or overlap without first consulting the Gerber Field Service Department.

4. Press either VINYL SLEW key so that the display reads **CHECKSUM ON** or **CHECKSUM OFF**.
5. Press the RESET key. The display reads **OFFLINE**.
6. Turn the EDGE off, then on. The EDGE display reads **OFFLINE**.
7. Press the ONLINE key. The display reads **ONLINE** and the EDGE is ready for printing.

Changing the EDGE overlap setting

Changing the EDGE overlap setting consists of opening the Setup menu, setting the desired overlap, and pressing the RESET key (RS) to return to the Offline mode

► To change the EDGE overlap setting

1. Plug in and turn on the EDGE first, then the computer.
2. The EDGE display reads **OFFLINE**.
3. Repeatedly press the SETUP key until the display reads **OVERLAP** followed by the number of pixels. (The factory default is 15.)

Note: There are additional selections in the Setup menu that are used for Gerber diagnostic purposes only. If you go beyond the menu selection you want, repeatedly press the SETUP key until that selection appears again in the display. Do not change any settings except for checksum, test pattern, or overlap without first consulting the Gerber Field Service Department.

4. Press the left or right VINYL SLEW key to increase or decrease the amount of overlap.
5. Press the RESET key. The display reads **OFFLINE**.

Troubleshooting

Keypad display messages

The following is a list of messages, which may appear on the keypad display and the required action to respond to each message. If your action does not solve the problem, or if a message appears which is not listed here, contact your distributor or the Gerber Field Service Department.

Message	Required Action
CHECK FOIL	Make sure foil is correctly loaded and press ONLINE.
CHECK VINYL	Make sure vinyl is correctly loaded and press ONLINE.
CLOSE COVER	Close cover and press ONLINE.
DATA ERROR	Check the cabling between the computer and the EDGE. Make sure the EDGE checksum setting is the same as the Gerber software checksum setting (refer to the “Using the keypad and display” section on page 35). If the message continues, contact your distributor or the Gerber Field Service Department.
INITIALIZING	Wait for OFFLINE message.
OFFLINE	None.
ONLINE	None.
PAUSED	This message appears when ONLINE is pressed while the EDGE is printing. Press ONLINE again to resume printing. Press RESET to return to OFFLINE status.

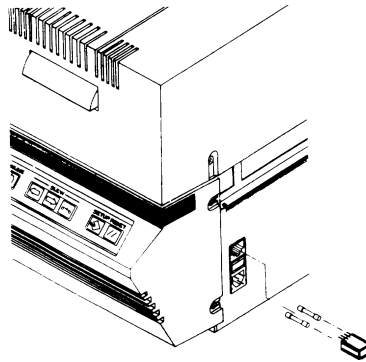
<i>Message</i>	<i>Required Action</i>
PRINTING IMAGE	None.
PROCESSING IMAGE	Wait for printing to start.
THERMISTOR ERROR	Wait for printhead to cool down. When printhead is sufficiently cool, the Paused message is displayed.
WARMING UP	Wait for machine to warm up and OFFLINE message to display.
WARMUP ERROR	If warmup takes longer than 5 minutes, this non-recoverable error message appears. Press the Reset key and call the Gerber Field Service Department.
Z-AXIS HOME ERROR	Call the Gerber Field Service Department.

Fuse replacement

Two spare 10 amp fuses are packed in the small components box. If you need to replace a fuse, locate the fuse carrier immediately above the power switch on the right side of the machine. It is labeled T10A 250V and has a notch at the bottom of the plate.

► To replace a fuse

1. Ensure that the power switch is off and then remove the power cord from the EDGE.
2. Insert a small flat screwdriver into the notch from below and pull out the fuse carrier plate.



Remove the fuse carrier and fuses.

3. Remove the fuse(s) from the fuse carrier. Insert new fuse(s).
4. Insert the fuse carrier into the EDGE with the notch down and snap into place.
5. Reconnect the power cord.

Index

- A**
- Abrasion guard..... 21
 Adding a plotter..... 5
- B**
- Bail arm 33
 cleaning..... 28
- C**
- Chassis, parts and functions 31
 Checksum
 changing..... 41
 matching..... 40
 Cleaning
 bail arms, squeegees, and sprockets 28
 foil..... 26, 27
 foil squeegee 27
 importance 26
 material 26
 platen 28
 printhead 27
 tips 26
 Color cartridge
 changing..... 16, 22
 estimate remaining foil..... 22
 function 34
 loading 15, 22
 storing 26
 Connector, printer 32
 Cover interlock sensor 32
 2
 Cutting after printing..... 12, 17, 25
 eyepiece 25
- D**
- Dancer bars 34
- Display
 function 32
 messages..... 43
- E**
- EDGE
 adding to Plot 4
 checksum..... 40
 connecting 4
 overlap setting 42
 setup guidelines..... 4
 Error messages 43
 Eyepiece 25
- F**
- Firmware overview 36
 Foil slew key 35
 Foil squeegee 34
 cleaning 27
 Fuse replacement..... 45
- G**
- GRAPHIX ADVANTAGE 4, 6
 GSP Setup 5
- H**
- Head home sensor 32
 Home key 35
- J**
- Jobs
 cutting 12, 17
 printing..... 11, 16
 sample 8, 14

K

Keypad	
display messages	43
function	32
keys	35
using	35

M

Material	
cleaning	26
loading	9, 15, 20
Messages, display	43
Modes	
offline	37
online error	38
online idle	37
online paused	38
online print	37

O

Offline mode	37
OMEGA	4, 6
Online error mode	38
Online idle mode	37
Online key	35
Online paused mode	38
Online print mode	37
Out-of-foil sensor	34
Out-of-vinyl sensor	33
Overlap, changing	42
Overview, firmware	36

P

Parallel connector	32
Parts and their functions	
chassis	31
keypad and display	35
platen assembly	33
print head assembly	34
Paused mode	38
Platen	
cleaning	28
parts and functions	33
Power cord	32

Power supply	32
Power switch	32
Print test key	35
Printer connector	32
Printhead	
cleaning	27
parts and functions	34
Printhead down sensor	32
Printing	
correcting problems	29
cutting after	24
guidelines	23
loading material	9, 20
loading the color cartridge	10, 21
overview	7
problems	29
quality	26
sample jobs	8, 14
setting up a job	19
starting	24

R

Registration	
color to color	24, 29
cutting to print	25
Repacking	3
Reset key	35
Resetting to factory parameters	39

S

Safety	2
Sample jobs	8, 14
Sensor	
cover interlock	32
head home	32
out-of-foil	34
out-of-vinyl	33
printhead down	32
Sensors	31, 33, 34
Setting up	
a job	19
adding a plotter	5
adding the EDGE	5
connecting	4
guidelines	4

Setup key 35
Setup menu 39
Shipping package 3
Slow slew 7
Sprockets 33
 cleaning 28
Squeegees
 cleaning 28
 foil 34

T

Troubleshooting 43

U

Unpacking 3

V

Vinyl *See Material*
Vinyl slew keys 35